

# State of Wyoming Corner Record

*CORNER PERPETUATION AND FILING ACT,*

Regulations of the Board of Registration for Professional Engineers and Land Surveyors.)

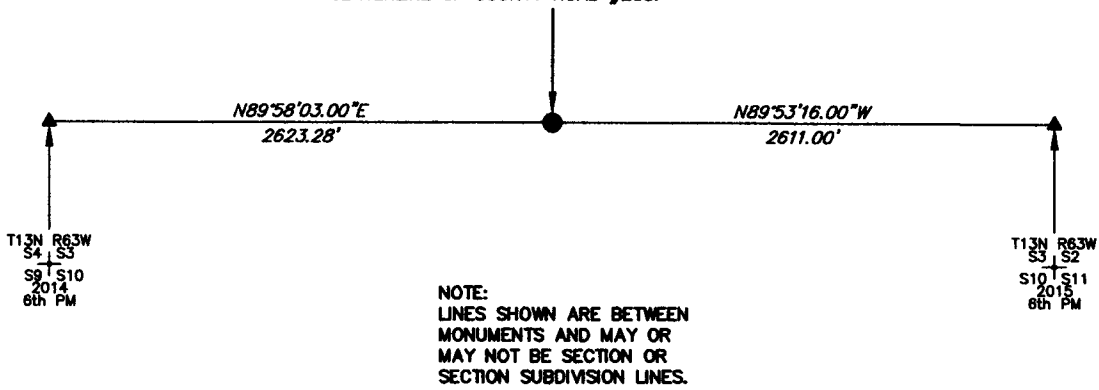
Reverse side of this form may be used if more space is needed.

Record of original survey and citation of source of historic information (if corner is lost or obliterated). Description of corner monumentation evidence found and/or monument and accessories established to perpetuate the location of this corner. Sketch of relative location of monument, accessories, and reference points with course and distance to adjacent corner(s) (if determined in this survey). Method and rationale for reestablishment of lost or obliterated corner.

THE MONUMENT  
IS FOR:

T13N R63W  
1/4 S3  
S10  
2015  
6th PM

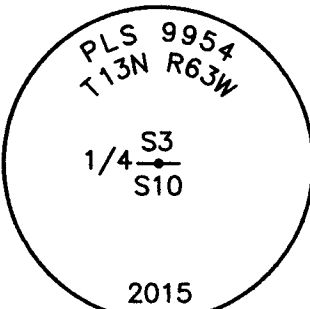
FOUND THE MONUMENT FOR THIS 1/4 CORNER OF MAXIMUM CONTROL WHICH WAS A 3/4" REBAR AS SPECIFIED ON PREVIOUS RECORD. UPGRADED TO A 2.5" ALUMINUM CAP 0.3' BELOW GROUND IN THE CENTERLINE OF COUNTY ROAD #208.



NOTE:  
LINES SHOWN ARE BETWEEN MONUMENTS AND MAY OR MAY NOT BE SECTION OR SECTION SUBDIVISION LINES.

↑  
N

SCALE 1"=1000'  
(EXCEPT IN TRIVIAL CASES)  
BEARINGS ARE RELATED TO WGS 84 WITH GPS OBSERVATIONS  
DRAWN BY: SM  
P.C. G. WEIMER  
COUNTY: LARAMIE



**CORNER MONUMENT SYMBOLS**

- RECORD IS FOR THIS CORNER MONUMENT.
- ▲ A RELATED CORNER OR WC MONUMENT.

THE MONUMENT IS MARKED

Date of Field Work: 05/20/2015 Office Reference: \_\_\_\_\_

**CROSS INDEX DIAGRAM**

A	1	2	3	4	5	6	7	8	9	10	11	12	13	14	15	16	17	18	19	20	21	22	23	24	25
B																									
C			6		5		4		3		2		1												
D																									
E																									
F																									
G			7		8		9		10		11		12												
H																									
J																									
K																									
L			18		17		16		15		14		13												
M																									
N																									
O																									
P			19		20		21		22		23		24												
Q																									
R																									
S																									
T			30		29		28		27		26		25												
U																									
V																									
W																									
X			31		32		33		34		35		36												
Y																									
Z	1	2	3	4	5	6	7	8	9	10	11	12	13	14	15	16	17	18	19	20	21	22	23	24	25

Firm/Agency, Address

UELS, LLC

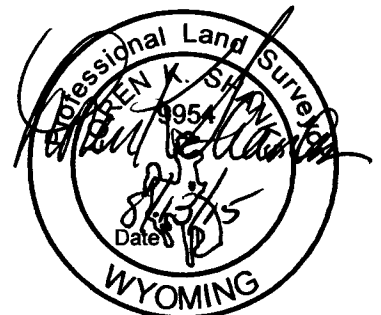
85 South 200 East

Vernal, Utah 84078

Telephone Number: 435-789-1017

This corner record was prepared by me or under my direction and supervision.

**SEAL & SIGNATURE**



RECP #: 670104  
RECORDED 9/22/2015 AT 10:42 AM BK# 2465 PG# 112  
Debra K. Lathrop, CLERK OF LARAMIE COUNTY, WY PAGE 1 OF 1